

Appendix C: Resources

Your Group's First Year Calendar (blank)

One Year Group Meetings Calendar			
	Meetings	Dates (Pencil)	
1st Quarter			
experience Life: 1st 6 Weeks Intro Meetings Review Missionaries & Prayer Party with Families	1		
	2		
	3		
	4		
	5		
	6		
	7		
	8		
2nd Quarter			
<i>Christ in You- Alive & Free - or - Established in Christ Guide</i> Service Project Serve a Group Member	9		
	10		
	11		
	12		
	13		
	14		
	15		
	16		
3rd Quarter			
Intro to <i>Abiding in Christ Bible Study</i> Party with friends who don't know Jesus or Prayer Walk Missionary visits the Group	17		
	18		
	19		
	20		
	21		
	22		
	4th Quarter		
	Celebrate or Mourn with Group Member Easter, Christmas, Summer Serve, Childcare Event, etc.	23	
24			
25			

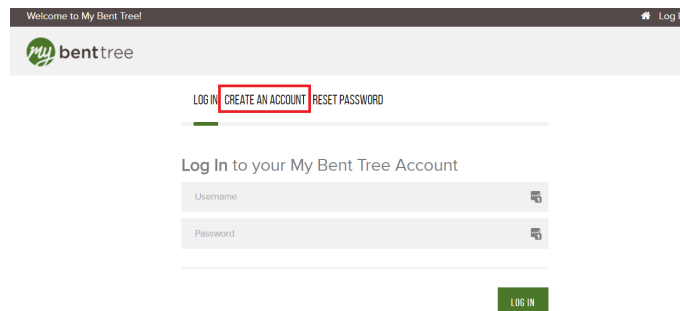
Ministry Platform

Welcome to the new and improved My Bent Tree. This site has been created to assist you in managing the groups that you lead including, emailing group members, taking group attendance, managing group inquires, and sending out meeting invites. You may access My Bent Tree at <https://login.benttree.org>; this site is also mobile friendly and may be accessed on a smart phone or tablet. This user guide is not a comprehensive detailed account of My Bent Tree, but focuses on functions need for group leaders and ministry team or servant team leaders.

Logging In

Create Account

If you had not already created an account on the previous portal experience, you will need to do so to access My Bent Tree. To do this, simply click on Create An Account and fill out the requested information. Be sure to use the email address that you use to receive regular information from Bent Tree.



Welcome to My Bent Tree! Log In

my benttree

[LOG IN](#) **CREATE AN ACCOUNT** [RESET PASSWORD](#)

Log In to your My Bent Tree Account

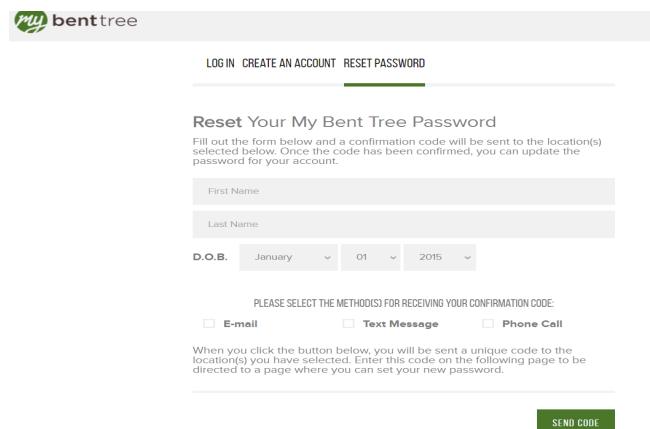
Username

Password

[LOG IN](#)

Forgot Password

If you have forgotten your password; please click on Reset Password.



my benttree

[LOG IN](#) [CREATE AN ACCOUNT](#) **RESET PASSWORD**

Reset Your My Bent Tree Password

Fill out the form below and a confirmation code will be sent to the location(s) selected below. Once the code has been confirmed, you can update the password for your account.

First Name

Last Name

D.O.B.

PLEASE SELECT THE METHOD(S) FOR RECEIVING YOUR CONFIRMATION CODE:

E-mail Text Message Phone Call

When you click the button below, you will be sent a unique code to the location(s) you have selected. Enter this code on the following page to be directed to a page where you can set your new password.

[SEND CODE](#)

Once you have created an account, you will receive an email with your username and password. If you have an issue logging in, please feel free to contact our Database Manager at jjohnston@benttree.org

Group Management

To get to your group once logged in, click on the circle that says My Connections. If you do not see this circle click on the header bar link that says Connect. You will then see a circle that says My Connections.



Once inside of My Connections, expand the bar that says Groups by clicking anywhere on it. This will give you a list of groups you belong to; including groups that you are the leader of.

Groups					
Group Name	Contact	Day	Time	Location	Actions
1st Hour - Usher Team Member	Marguerite Fenton				Leave Group

Click on the group name that you are a leader of to access the group management functions.

Group Details

The first page of the group management functions is the group details page. Here you can update the description and meeting time of your group for small groups. We ask that Ministry Team leaders not edit this information, but to contact your staff contact to do it to make sure we have consistent language. You can also create a meeting for your upcoming small group meeting from this screen.

GROUP DETAILS LEADERS MEMBERS INQUIRIES EVENTS

Group Name: 1st Hour - Usher Team Member

Description: Greet visitors and guests with a smile. Serve as an usher helping with bulletin distribution, seating of guests, helping with offering, and communion. Assist with attendance count. No application required. Greet visitors and guests with a smile. Serve as an usher helping with bulletin distribution, seating of guests, helping with offering, and communion. Assist with attendance count. No application required.

Meeting Time: ,

Contact: **Marguerite Fenton**

EDIT GROUP CREATE MEETING

Create Meeting

When you select the Create Meeting button, it will take you to a screen to create a meeting for your group. This is a necessary step in taking attendance. This can also be done from the group calendar.

BACK TO GROUP >

Meeting Name:

Start Date:

Start Time:

End Date:

End Time:

Frequency:

Meeting Instructions:

CANCEL CREATE MEETING

Meeting Details and Updating Attendance

Under meeting details, you can edit your event information and update your attendance status. You can update the attendance of your group members by selecting the group members inside of the meeting details screen and selecting the members whose attendance you want to update and then selecting the update attendance button at the bottom of the screen.

Actions:

- Select An Action -
- Update Attendance**
- Email Members

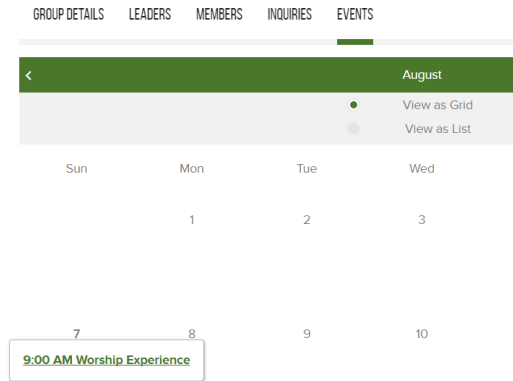
Then select the attendance type 03 Attended if they came to the meeting and click Update Status.

03 Attended

UPDATE STATUS

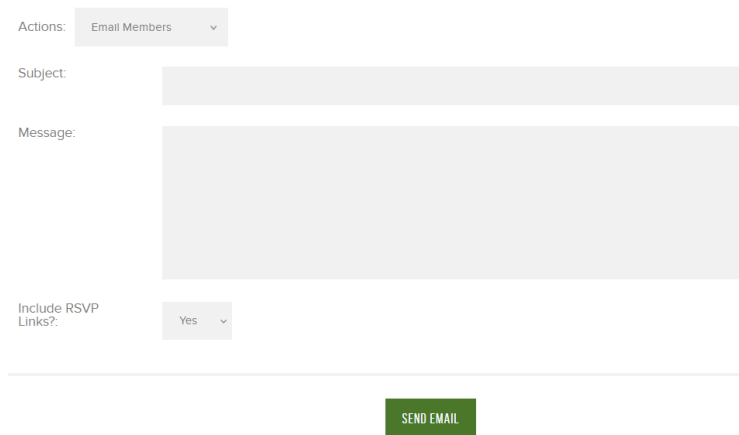
Meeting Invites

To send a Meeting Invite, click on Events. Then select the meeting day that you want to send an invite for.



Once in the event, select the tab that says Group Members. You can then select the members you want to send an invite to or at the bottom of the list click the select All Members button.

Then select Actions, Email Members. Be sure to select Include RSVP Links option as Yes. Your message must include a subject and message. Then select Send Email.



Those invited to the event will get an email with hyperlinks asking if they are coming. All they have to do is click on the link and they will auto be logged in with their response.

Group Member Management

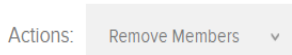
You may see and edit your group members for the Members tab in the group.



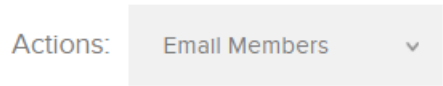
To add a member, click the add member button. They must already be in the Bent Tree database to be added. **If they are not in the database, please send the information of the person to your staff contact to have them added.



You may remove members by selecting them and then using the Actions drop down at the bottom of the screen called Remove Members. The Remove Members button will appear to click.



You may also email a group member (or inquirer) from the Members (or Inquirers) tab by clicking on their name which will open up an email in your preset email client. (i.e. outlook). All those with their name in **bold** print will have an email address. You may also email multiple members by selecting them and using the actions button at the bottom of the page.



Prayer in the Small Group

There is perhaps no greater spiritual activity for building community in a small group than group prayer. To lift one another up in prayer regularly can serve as an act of service and humility that bonds people together in powerful ways. Many Christians in your group will feel right at home praying out loud with the group, while others will not be so comfortable. Care must be taken not to put members or guests on the spot when offering times of prayer with your group. There are many approaches to prayer in small groups that are effective. Here are just a few examples:

1. Prayer Triads/Quads – At any point during your group meeting, break the group up into groups of 3-4 (preferably along gender lines) and ask these sub groups to spread out around the house. Ask each group member to share their requests and then pray for the person sitting on their right hand side. Be sure to mention that it is fine if you do not feel comfortable praying out loud. If anyone is uncomfortable praying out loud in the group, when it is their time to pray, have them simply tap the shoulder of the person on their right and that will signal them to pick up the prayer time. By providing a prayer time structured in this way, you multiply the time people are allowed to spend in prayer by using smaller sub-groups. If everyone was all together or even just divided along gender lines into two groups, the amount of time spent hearing requests and then actually praying would take much longer.

2. Conversational Prayer – Another approach to prayer which can also be done in “prayer triads/quads” is conversationally praying. In a conversation, one person shares a thought and another picks up on it and continues the discussion. Eventually, another person changes the subject altogether and presents another thought to discuss and so it continues. Conversational prayer operates much the same way. Once you break your group up into smaller groups, ask them to start off the prayer time praying for anything they feel compelled to pray about. Any other person in the group can pick up on this theme and continue praying for what was just mentioned. Another may do the same or may want to introduce another topic of prayer into the conversation. Once they are finished, someone else can either pick up on that topic or introduce another one. People should feel free to continue offering up new topics, focusing on one at a time. These groups will soon begin to experience a conversational style of praying. The advantage of this approach is that your group gets right into prayer instead of sharing prayer requests and then praying about the same things they just listed for everyone in the group. Be sure to ask each sub-group to identify someone who will officially close out the conversational prayer time or nobody will know when it's finally over!

3. Pray as Needed – There will be times in your group when a member will share something right in the middle of the meeting that clearly is an important matter of prayer. Someone may share that they lost their job the day before or that the doctor just told them that they will need major surgery. Don't let these go unaddressed. In moments like these, it would be very meaningful to that person if the group would stand up, lay their hands on his/her shoulders, and pray for their need right then. You may even encounter evenings when most of your group members need this kind of immediate prayer. Agendas should be set aside to have these needs addressed in prayer. Your group will experience God at work at times like these as perhaps they never have before. Your role as the leader of the group is simply to be available and open to what God wants you to do at these times.

4. Establishing Prayer Partners – As a group leader, it would be appropriate to suggest that any pair of members who would like to get together outside of the group meeting times for additional times of prayer should do so. Meeting together for prayer outside of the regular group times can only strengthen the bond of love that your members will have for one another. Obviously, prayer partners should link up with those of the same gender, and this should probably be done offline at a time other than in the meeting. If some people in your group are not approached about being in a prayer partner team, they may feel left out and discouraged.

5. Ministry Platform Online Support – Your community pastor or mentor will provide each of their small group leaders with access to Bent Tree's Ministry Platform online support. This enables you to not only keep track of your members but also allows you an easy way to get prayer requests out to members. Additionally, it allows members the opportunity to respond to answered prayers thereby keeping the whole group informed during the week instead of having to wait until the next meeting. See the resources section of these materials for more details on how to set up Ministry Platform for your group. Jesus prayed and He taught us to pray. Teaching our group members to regularly pray for one another is a very important way that the small group leader can help disciple their group members. Praying for each of your members on a regular basis is also important. See the list of ways that the leader could pray for their group members. Let your group know that you are praying for them. It will greatly encourage them! Your mentors have also committed to praying for you as a group leader. In this way, every member of Bent Tree could possibly be prayed for on a regular basis all over the city, and that is a goal worth aiming for!

Possible Prayer Schedule:

- Sunday: Pray for members' personal walk with God.
- Monday: Pray for members' work and financial situation.
- Tuesday: Pray for members' spiritual maturity and development.
- Wednesday: Pray for members' ministry.
- Thursday: Pray for members' physical and emotional health.
- Friday: Pray for members' protection from sin and spiritual attack.
- Saturday: Pray for members' family relationships.

What Does It Look Like To Do Life Together?

Perhaps the best way to grasp what a small group should look like or how the members of such a group should behave towards one another is to look at the Scriptures themselves. In the “one another’s” of the New Testament, we have a full view into the kind of life God wants every Christian to experience.

Positive “One Another’s”

Members of one another (Rom 12:5)
Devoted to one another (Rom 12:10)
Honoring one another (Rom 12:10)
Being of the same mind toward one another (Rom 12:16; 15:5)
Loving one another (Rom 13:8; 1 Thes 3:12; 4:9; 2 Thes 1:3; Heb 10:24; 1 Pet 1:22; 1 John 3:11, 23; 4:7, 11, 12; 2 John 5)
Edifying one another (Rom 14:9)
Accepting one another (Rom 15:7)
Instructing one another (Rom 15:14)
Greeting one another (Rom 16:16; 1 Cor 16:20; 2 Cor 13:12; 1 Thes 5:26; 1 Pet 5:14)
Waiting for one another (1 Cor 11:33)
Caring for one another (1 Cor 12:25)
Serving one another (Gal 5:13)
Carrying one another’s burdens (Gal 6:2)
Bearing with one another (Eph 4:2; Col 3:13)
Being kind to one another (Eph 4:32)
Submitting to one another (Eph 5:21; 1 Pet 5:5)
Esteeming one another (Phil 2:3)
Encouraging one another (1 Thes 4:18; 5:11, 14)
Confessing sins to one another (James 5:16)
Praying for one another (Jas 5:16)
Offering hospitality to one another (1 Pet 4:9)
Fellowshipping with one another (1 John 1:7)

Negative “One Another’s”

Not lusting for one another (Rom 1:27)
Not judging one another (Rom 14:13)
Not depriving one another (1 Cor 7:5)
Not biting one another (Gal 5:15)
Not devouring one another (Gal 5:15)
Not destroying one another (Gal 5:15)
Not provoking one another (Gal 5:26)
Not envying one another (Gal 5:26)
Not lying to one another (Col 3:9)
Not hating one another (Titus 3:3)
Not slandering one another (James 4:11)
Not grumbling against one another (James 5:9)

(From Gene Getz, *Building Up One Another*, Victor Books, Introduction.)

Groups Sharing Life in Christ: The 3-D's

Terminology:

- Influence – the power or capacity of causing an effect in indirect or intangible ways (Webster).
- One – A person in your life who does not profess to know Jesus Christ as savior.
- Spiritual Influence – Through actions, listening, and words open the mind and heart of your One to think thoughtfully about Jesus and their relationship to Him.

Cultivating Spiritual Influence:

- I Influence

Ask God, “Who is my One?”

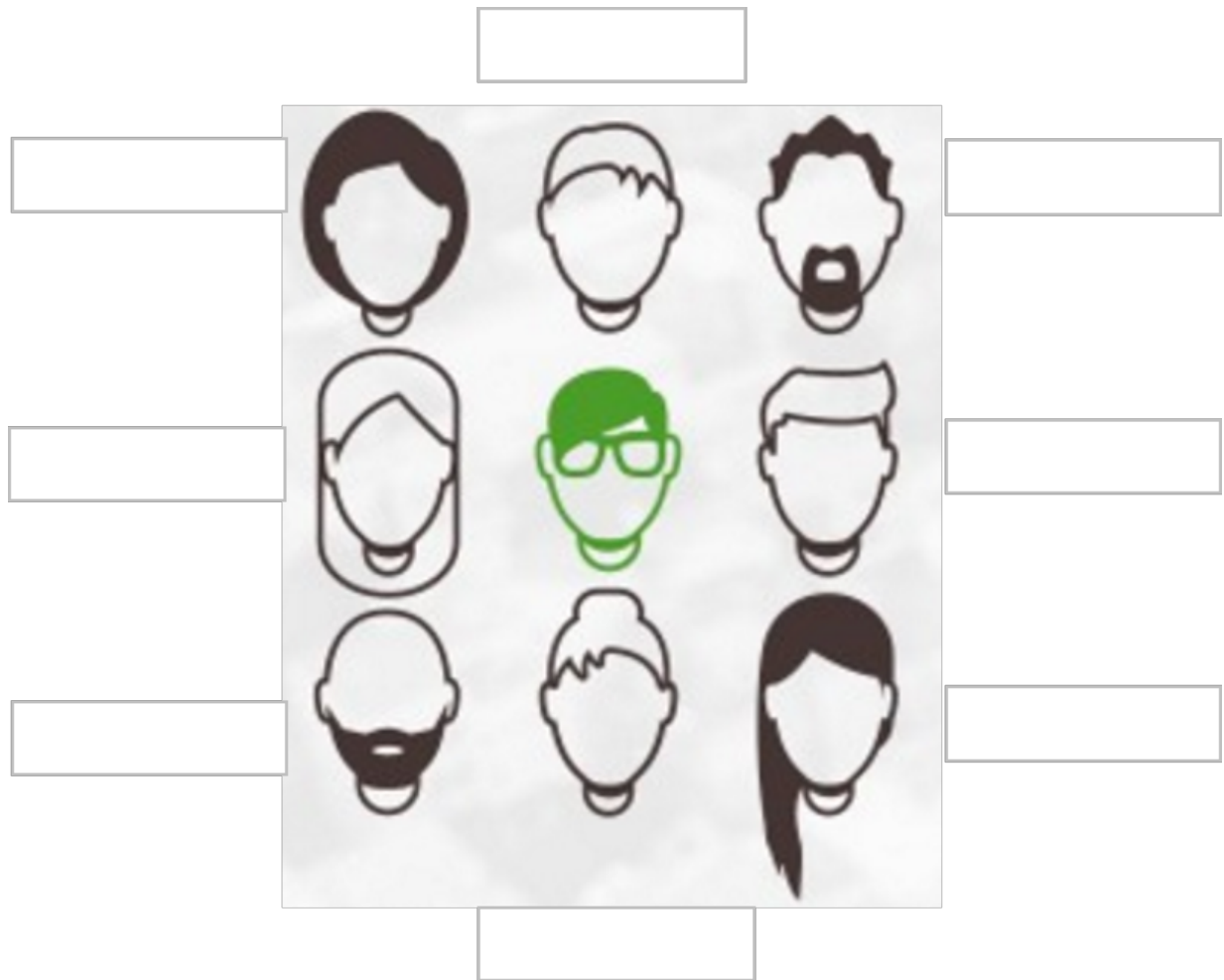
- Develop Relationships – Be intentional about listening to your One.
- Discover Stories – Look for common ground with your One.
- Discern Next Steps – Ask the Holy Spirit what He wants you to do next.

- We Influence

How could my small group help me live out the 3-D's with my One?

- As a group discuss God's heart for all people.
- Start a list together of everyone locally without Jesus each group member knows.
- Start praying for these people regularly.
- Learn how to share your faith.
- Be a “neighbor” to your One 5X's in one year and see what God does with that.
- Share 3-D stories with one another.
- Provide a few gatherings with a purpose: Invite those on your prayer list to come.
- Open the group for 1-3 meetings for spiritual discussion with unbelievers.
- Sponsor a group: “Birth” one or more groups.

Your Neighbors



***Find out who your neighbors are**
(at home, at work, or both)

***Pray for them**

***Pray for opportunities to share life**

Facilitating Discussion in a Small Group

Effective Bible discussion, generated by a hospitable learning environment, is a guided conversation that involves people in observing, interpreting, and applying God's Word.

A good Bible discussion has:

- A leader who originates and directs the conversation.
- One or more questions to provoke thought.
- A meaningful, specific goal for group interaction.
- Two or more interested participants.
- An authoritative source of truth (God's word).
- A supportive learning environment.

Getting a Handle on Facilitating Discussion:

- Don't feel threatened by open discussion.
 - Ask open ended questions (questions that can't be answered with a simple yes or no).
- Don't fear questions from your group.
 - The first critical factor in establishing a motivational climate is helping your members know that you care about them.
 - Pray as a discussion facilitator that members of your group will develop strong bonds.
 - Ask the Lord to give you a love for the group you are teaching, especially those who tend to annoy you!
 - Be the first to arrive at the meeting and greet people as they arrive.
 - When you form a new group, don't delve into heavy Bible content right off the bat.
- Use humor to start the discussion off.
 - For example, if you're doing a discussion on King Solomon, who acted more foolishly the older he got, you might want to use an illustration like this. You know you're getting older when...
 - You sink your teeth into a steak and they stay.
 - Your back goes out more than you do.
 - You lean over to pick up something off the floor, and you start wondering, "Now what else can I do while I'm down here?"
 - You sit in a rocking chair and can't make it go.
 - You turn the lights out for economic, rather than romantic, reasons.
 - Studies show that students who hear a humor-laced presentation remember more!
- Transparency on the part of the facilitator can create a greater discussion time.
- In general, do not ask direct questions of individuals during the group time.
 - Ask volunteers to read from the Bible out loud.
 - For group member(s) who don't respond each week, draw them out into the discussion by asking opinion questions.
 - Use offline conversations for the guy who won't stop talking.
- You don't have to be the "Bible Answer Person".

Small Group FAQ's

Questions about Leading a Small Group:

1. What if my members ask me a question about the Bible that I don't know?

Let's be honest. No one knows all of the answers to Bible questions! It is perfectly fine to acknowledge to your group that you don't have all of the answers any more than they do. However, if it is a question that you or another member of your group could research during the following week, offer to do that and share a possible answer to the question at a later date. Don't be afraid of good questions. They can stimulate real interest in your group. Also, don't be afraid to ask good questions in your group; even ones that you don't have answers to yourself. Force your members to think and go home and do a little research for themselves!

2. What if no one shows up to my group?

It's a good idea to call, email, or text each member a few days before your first meeting to make sure everyone is on the same page. Ask each member to bring something, do something, or host is a great way to ensure total group involvement early on.

3. What if someone in the group needs the kind of help that I can't give them?

Small group leaders are rarely professional counselors. That's why Bent Tree provides resources to help your members during times of special need. You can ask about these resources by contacting your Community Pastor at 972-306-4477. These resources can range from Biblical counselors, to materials, to specialized small groups designed to help your members deal with separation, divorce, loss of a loved one, and various addictions. Use the resources available, but don't try to fix the hurting member's special need in your group. It will overwhelm your members and may not provide the help the hurting one needs.

4. "My house is too (fill in the blank)." What will people think?

Relax. You have invited people to your home, and as long as it is relatively clean and comfortable everyone will be fine. Our culture borderlines on being obsessive about making our homes look like models before we will invite anyone over. This is not needed to provide a comfortable environment in which to do life together.

Here are some other potential hindrances to community to be aware of but not afraid of:

- Individualism
- Competing personal agendas
- Fear of vulnerability
- Unresolved conflict
- A judgmental atmosphere
- Inadequate leadership

Group Agreement: Nine Characteristics of Biblical Fellowship

To enhance our grasp of the grace and knowledge of Jesus Christ our Lord we will lean into the Holy Spirit of God to enable us to treat our fellow small group members in the following ways...

- Authenticity - We will share our true feelings (I John 1:7-8)
- Mutuality - We will encourage each other (I Cor.12:25)
- Sympathy - We will support each other (Col. 3:12)
- Mercy - We will forgive each other (II Cor. 2:7)
- Honesty - We will speak the truth in love with one another (Prov. 24:26)
- Humility - We will admit our weaknesses (I Pet. 5:5b)
- Courtesy - We will respect our differences (Rom. 15:2)
- Confidentiality - We will not gossip (Prov. 16:28)
- Frequency - We will make attending our group a priority (Heb. 10:25)

Group Guidelines:

- The group will meet from _____ through _____, year _____.
- The group will meet on _____ evenings, _____ month.
- The group sessions will begin at _____ am/pm and end at _____ am/pm.
- Group members are asked to attend and participate on a regular basis.
- Members agree to pray for other group members on a _____ basis.
- Group members recognize that one of the goals of this group is to start a new one within the life cycle of the group. This allows others to experience Life in Christ with one another!

Group Leader(s): _____, _____,

Group Members: _____,
_____, _____,
_____, _____,
_____, _____,
_____, _____,
_____, _____,

Sample Icebreakers

Using icebreakers is an essential small group skill. They should begin with light and informational questions, then move to deeper and more personal levels as the group progresses together. If used well, they can move the group to experience greater community!

Level 1 - Information: *What you know:*

- What is your favorite movie and why?
- What is your favorite city? Why?
- What day of your life would you most like to relive? Why?
- What does your name mean? Why were you named that?
- If your house were on fire, what three items (not people) would you try to save?
- What was the best gift you ever received as a child?
- If you suddenly lost your eyesight, what would be the thing you missed seeing the most?
- What was your first job? What do you remember most about it?
- Tell the group briefly a story from your wedding day.
- If you could go to college (again), what would you study?
- You have been given a year sabbatical from work. What would you do?
- What has been one of the greatest adventures you have ever been on?

Level 2 - Opinions: *What you think:*

- Who is one of your heroes and why?
- Who is your number one advisor in life and why?
- My favorite way to spend time is _____.
- Just for the fun/thrill of it, before I die I'd like to _____.
- I was (or would have been) voted "Most likely to" _____ in high school?
- I wish before I got married someone had told me _____.
- If you were going to leave the world one piece of advice before you died, what would you say?
- Who was one of the most interesting people you or your family ever entertained?
- Who was the best boss you ever had? What made him or her so good?
- People might be surprised to find out that I _____.
- Describe a grade school teacher that made a big impression on you (for good or ill).
- Each one in the group answer for the person on the right, "_____, I am so glad God made you because _____."

Level 3 - Feeling: *Who you are:*

- What is your biggest fear about death?
- What do you miss most about childhood?
- I am most like my mom/dad in that I _____.
- One of my biggest pet peeves is _____.
- When you were a child, what did you want to be when you grew up? Are there any surprises?
- For what do you want to be remembered?
- An emotion I often feel but don't usually express is _____.
- Where do you go or what do you do when life gets too heavy for you? Why?
- In what area of your life would you like to have greater peace? Why?
- What is one of your biggest fears about the future?
- In general, I worry too much about?
- When you were a child, what was your favorite time of day and why?

Lifemapping Exercise Instructions

Focus of this Session

By now, people should have had the opportunity to learn quite a bit of “safe” information about each other. The creation of a secure and accepting environment can continue by giving people the chance to share some of the highlights from their lives. Everyone can point to significant factors from their lives, both past and present, which have contributed to the kind of person they are today.

This lesson will encourage the members of your group to:

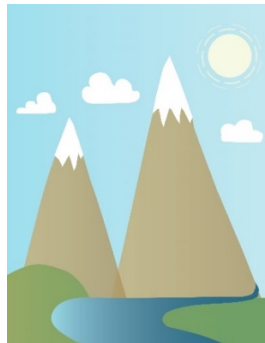
- Briefly share their life stories
- Understand one another better
- Build bridges towards deeper relationships within the LifeGroup

Getting Ready to Meet

As the leader, you will want to prepare for this session by drawing your own life map before the meeting. Be careful not to make it so complete that it will intimidate or discourage other group members who only have a limited time during the meeting to illustrate their own stories. Your life map should provide an example for them to follow in designing their own. (*Replicable map is available on page 83.*)

- Ask members to think of the 2 peaks/2 valley’s drawing below as an illustration of two important life changing events that have occurred in their lives and two difficult experiences or even learning experiences they have gone through. Have them write these on the peaks and valleys and be prepared to share some of this with the group.

LifeMap example



Read the Opening:

“Every one of us has a story to tell – it’s the story of our own lives! For all of us, there are both good and bad elements to our stories, memories we recall with fondness and things we would rather forget. Nevertheless, each experience has contributed to the person we are today. As we continue to get to know one another and develop significant relationships within our group, it can be helpful to peel back the veneer of today to catch a glimpse of highlights from our lives in the past. Our purpose is to get to know the person behind the mask as we share our continuing journeys with one another. We want to use a tool called a *“Life Map”* to help us share our stories.”

Discussion

The story of Moses recorded in the Bible provides a good example of how various elements in a person's life can affect who they become later on. Consider some of the following biographical snapshots from this man's life:

- Born to Hebrew parents, enslaved in Egypt
- Escaped being murdered as a baby
- Raised in the home of Egyptian royalty
- Fled into the wilderness after killing a man for beating another Hebrew
- Married a woman he had once protected from danger
- Became a shepherd, tending sheep in a foreign land
- Had a unique encounter with God through a burning bush

Discuss the following two questions as a large group:

1. How do you think these experiences affected the kind of person Moses became later in life?
2. How did they prepare him for what he would eventually be called upon to do?

Creating Your Life Map

If we were to illustrate some of these significant events of Moses' life on two peaks and two valleys, we would have his life map. Each of us has a life map of our own, even if only in our heads. During this time together, we want to begin getting some of those memories out of our heads and down on paper so others can get a better understanding of the person each of us is. Illustrate by having two of the leaders each prepared to share their life maps with the group, taking no more than 5-10 minutes.

Now, let's break into smaller groups of 3-4 and spread out around the house or yard to work on our own life maps. As a guide for content to include, recall the events that have most influenced who you are today, both positive and negative. Be as creative as you like in how you illustrate your life map.

Feel free to talk to one another in your small groups and share some of your life experiences as you work on your own timeline. This discussion may even jog your memory to recall similar experiences from your own life. Hand out copies of the drawing and allow a few minutes for them to work on their individual maps. Then bring people back together, possibly after a break. Ask several people to share their life map with the group as time permits. You will want to allow time in future meetings so everyone has the opportunity to share their story.

Closing and Prayer

It is so neat to realize that, though we are each very different from each other in some ways, God is blending us together for His purposes and for our blessing. Paul encouraged the Philippian believers when he wrote, *"that he who began a good work in you will carry it on to completion until the day of Christ Jesus"* (Philippians 1:6). Praise God that he is not finished with us yet!

As we pray, let's several of us thank God specifically in a sentence or two for something we have seen in another member's life that we really appreciate. Let's also ask him to continue to lead us to experience the life that he has designed for each of us to live. (You may want to stay together as a large group for prayer or possibly return to the smaller work groups to involve more people.)

LifeMap illustration



Identify 2 “peaks” and 2 “valleys” in your life and illustrate them on the map and share with the group.

Areas Of Service Within The Small Group

I would be interested in serving in the following areas: check all the appropriate box(es)

Spiritual Growth & Worship

- monitor the overall spiritual maturity of the group and of individual members (may include one or both LifeSigns, Established in Christ personal assessment)
- cast a vision for personal and spiritual growth
- work with group leaders to determine Bible or topical studies for the group
- facilitate individual discipleship opportunities
- facilitate Bible and other study discussions
- facilitate prayer (may include: prayer chain, journaling, leading/delegating for group meetings)

Service & Missions

- work with group leadership team to plan the group meetings
- identify the unique strengths of the group and how they could be utilized
- cast a vision for serving and making a difference beyond the group
- coordinate service projects for the group to do at the Bent Tree building or in the community
- serve as a liaison for the group with a specific missionary or mission cause
- help ensure that every member of the group knows how to share their faith
- facilitate organizing childcare for the group

Community & Evangelism

- monitor the overall health of the group (consider spiritual, relational & missional)
- anticipate and respond to special needs that arise among group members by mobilizing members to help each other (may include: celebrating birthdays & babies, acknowledging deaths & illness, fix-it help, babysitting exchange)
- organize refreshments for group
- make Bent Tree caring resources available to group members as needed
- assist new people in getting connected to the group
- set up calendar of meeting dates (service/mission projects) church events, fun/social dates...

Name: _____

Primary Phone: _____ Email: _____

Area of Service Group Compilation of Members

Areas of Service	Possible team member	Possible team member	Possible team member
Spiritual Growth & Worship			
Monitor overall spiritual maturity of the group and individual members (<i>LifeSigns, Est. in Christ...etc.</i>)			
Cast a vision for personal & Spiritual growth			
Work with group leaders to determine Bible or topical studies			
Facilitate individual discipleship opportunities			
Facilitate Bible and other study discussions			
Facilitate Prayer (<i>prayer chain, journaling, leading/delegating for group meetings.</i>)			
Service & Missions			
Work with group leadership team to plan group meetings			
Identify the unique strengths of the group and how they could be utilized.			
Cast a vision for serving and making a difference beyond the group			
Coordinate service projects @BT or in community			
Serve as a liaison between group & missionaries and mission causes			
Help ensure every member knows how to share their faith			
Facilitate and organize childcare for the group			
Community & Evangelism			
Monitor the overall health of the group (<i>spiritual, relational, missional</i>)			
Anticipate, respond, mobilize members to special needs (<i>birthdays, deaths & illness, fix it help...etc.</i>)			
Organize refreshments for the group			
Make Bent Tree caring resources available to group members as needed			
Assist new people in getting connected to the group			
Set up calendar of meeting dates (<i>service/mission projects, church events, fun/social, etc.</i>)			
Other - What ever the group needs			

Small Group Health Plan

Date _____ Leader: _____

Celebration – What has God done in the lives of the people in our group this past year that we would like to celebrate? How has our group loved each other well this past year?

Learnings/Opportunities – What are some things our group learned this past year? What does our group wish we could have done? What are some areas/opportunities for improvement?

What's Next? As we pray and plan, how do you think God is leading our group next year? What do we hope to see God accomplish? How can we pray specifically for our group?

Let's Talk

Let's Walk

Refreshment & Host Home Sign Up

Week or Date	Host Home	Address	Snacks
1.			
2.			
3.			
4.			
5.			
6.			
7.			
8.			
9.			
10.			

Web Links:

RightNow Media is set up as a church wide video subscription service. Go to: <https://www.RightNowMedia.org/Account/Invite/BentTree>, register and set up your account. If you do not have one, please see your community Pastor or email Karen Bledsoe: Kbledsoe@benttree.org. Your 'Username' is your full email address.

In the future, if you do not remember your password, please click the "Forgot Password" link at the bottom of the log in page and a link to reset your password will be emailed to you.

Log into rightnow.org: For the most up-to-date how to hookup/watch from online, go to: <https://support.rightnow.org/forums/20262592-How-To-Stream-Videos-From-RightNow-Media>. You will be able to find how to stream from any device by asking in the search bar.

What you will need:

- A television
- A device to play the video. For this example, we are using an iPad.
- A Cable to convert the signal from the device to your TV (Cables will vary with different players and televisions)
- An account with RightNow Media (see above)

Connect your tablet or other device to your TV using an airplay device or cable with a common connection slot called HDMI.

Play the video: Login to the RightNow Media website. Under "Libraries" scroll down and select "Bent Tree Bible Fellowship" for a list of recommended videos. If using for your Life Group studies first 6 weeks, please refer to the direct "RightNow Media" link listed under the appropriate day for watching.

Abiding in Christ Bible Study: Please visit: <https://wayquest.com/aic-bible-study/> to purchase the complete 9 lesson Study that you will use to select 4 sessions to do with your group any time of the year. Each copy must be purchased separately. *Please do not make copies for your group members off of one purchased copy.* As a leader, you can purchase all the copies for your group members or send them the above link for each to purchase their own. If you choose to purchase for the group, after selecting the quantity of copies you are purchasing, please click the "Let's Chat" tab at the top and put their email addresses in the comment box in order for them to receive the link to download the Study you purchased for them.

Sharing Your Faith: <https://benttree.org/about/the-gospel/>

GoodLife Shepherding: <https://www.rightnowmedia.org/Training/Post/View/197613>

Bent Tree Leader Path: <https://benttree.org/leader-path/>